

Video | Bosch Video Client

Bosch Video Client

Setup Guide



BOSCH
Invented for life

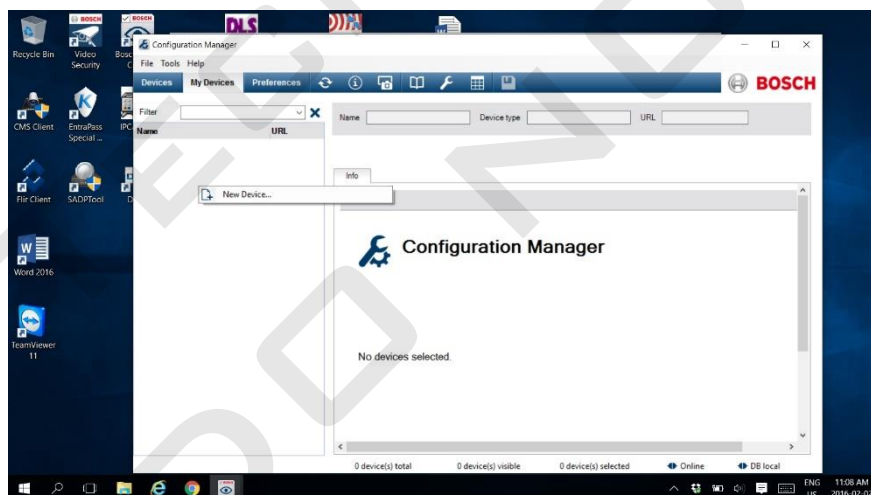
The screenshot displays the Bosch Video Client interface. At the top, there is a toolbar with various icons for camera control. The main area is a large dark rectangle representing a video feed. To the left is a sidebar with a tree view containing folders for 'Pops Group' and 'Quest'. Below the sidebar is a control panel with a large circular dial and several buttons. At the bottom of the interface is an event log table.

Time	Device	Events
2016-02-02 2:11:29 PM	DVR	Alarm output Relay 2 activated
2016-02-02 2:11:29 PM	DVR	Alarm output Relay 1 activated
2016-02-02 2:11:28 PM	DVR	Alarm output Relay 1 deactivated
2016-02-02 2:11:28 PM	DVR	Alarm output Relay 2 deactivated
2016-02-02 2:11:27 PM	DVR-630-16A	popnorth.dnsalias.com:8080 is connected
2016-02-02 2:11:27 PM	DVR-630-16A	Device is in state of alarm (double-click to a...
2016-02-02 2:11:27 PM	DVR	184.69.201.46:8080 is connected
2016-02-02 2:11:27 PM	DVR	Alarm input Contact 2 deactivated

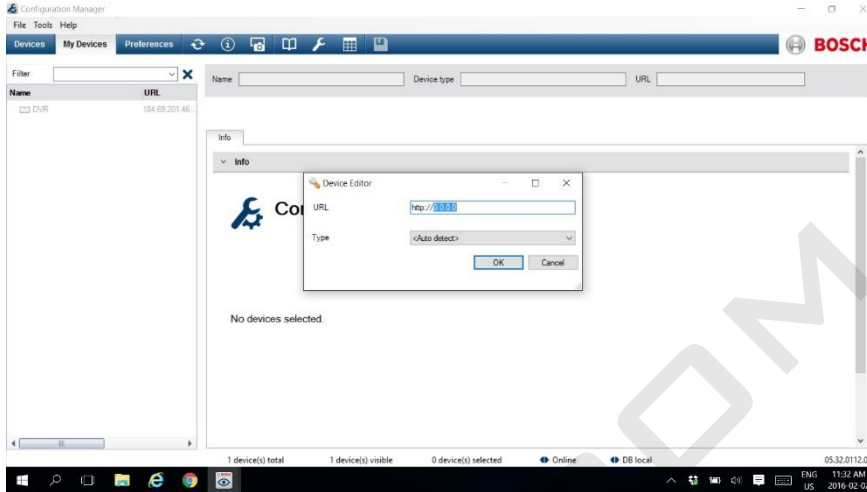


1. Load the BVC Software
2. Default Login is administrator no password

When opening BVC for the first time it will open up the config client and launch the configuration wizard just close the config wizard by hitting the cancel button.

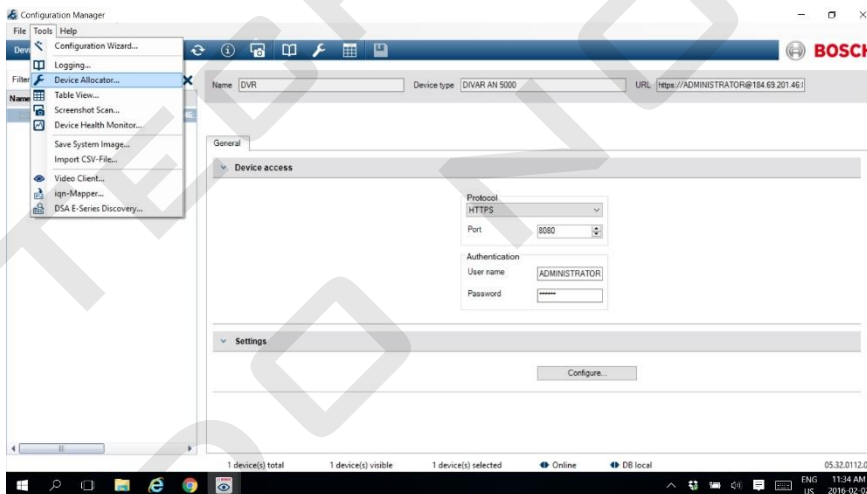
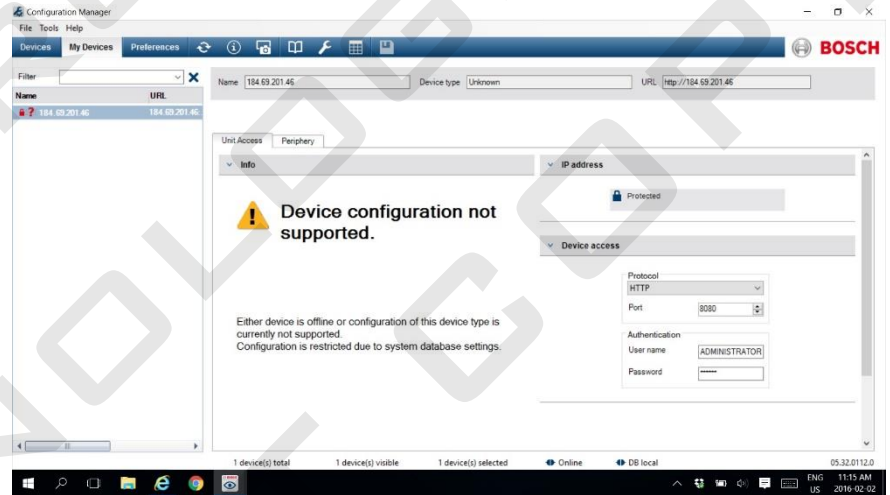


Once in the Configuration Manager Click on My Devices tab at the top then right click in the left column and select new device.

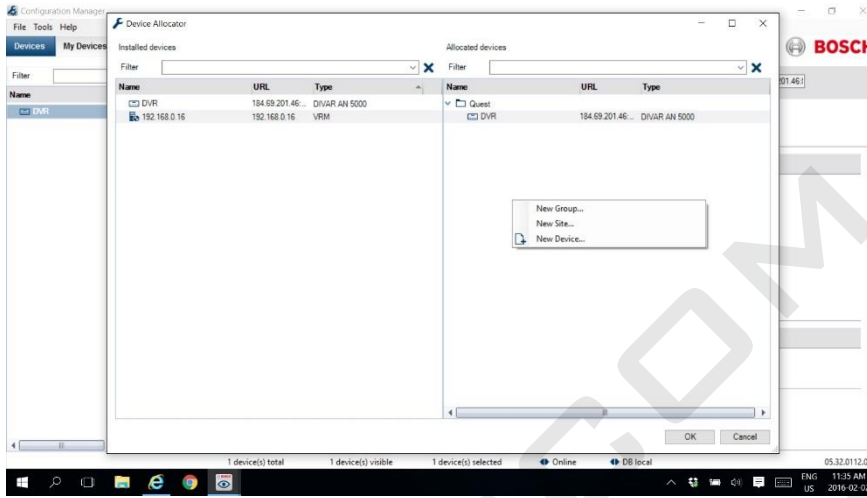


Enter the IP Address of the DVR or if setting up this on a remote computer enter the site IP or DNS Alias if one is setup.

Once you have entered the IP or URL you then need to click on the device and enter the port number as well as the user name and password to get on the DVR/NVR

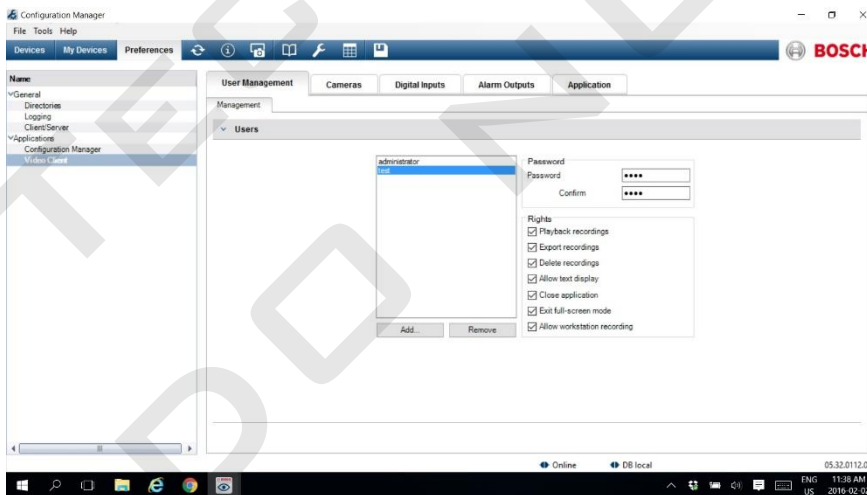
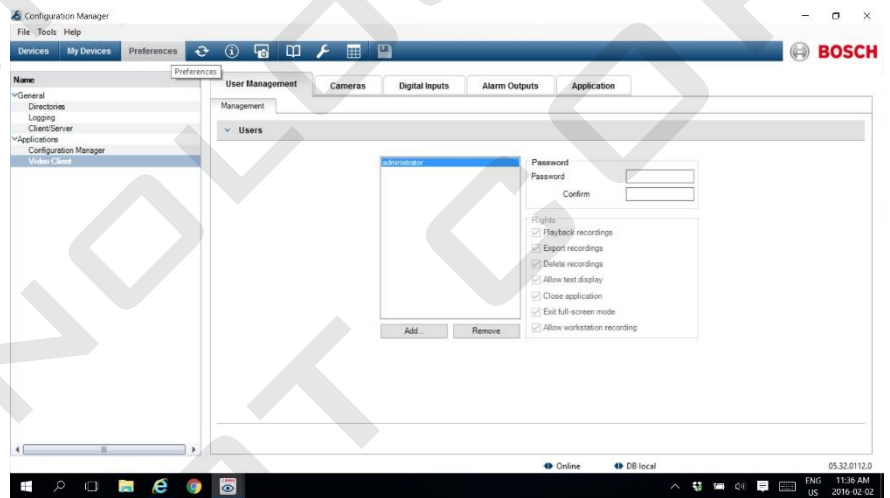


Once the device has been added we can go to the Device allocator to assign it to a group so it shows up nicely in the BVC software to do so goto Tools→then Device Allocator.



From here right click in the right hand column and select New Group and give it a name, then drag your DVR/NVR into the group this is great if you are going to have multiple unit's connection to one machine.

To setup additional logins to get onto the BVC software itself or to add a password what you do is goto the preferences tab then down to Video Client



You can add or remove logins here as well as set what rights each user has. To add a login simply click add at the bottom and enter a username and password you wish to use for that person.